



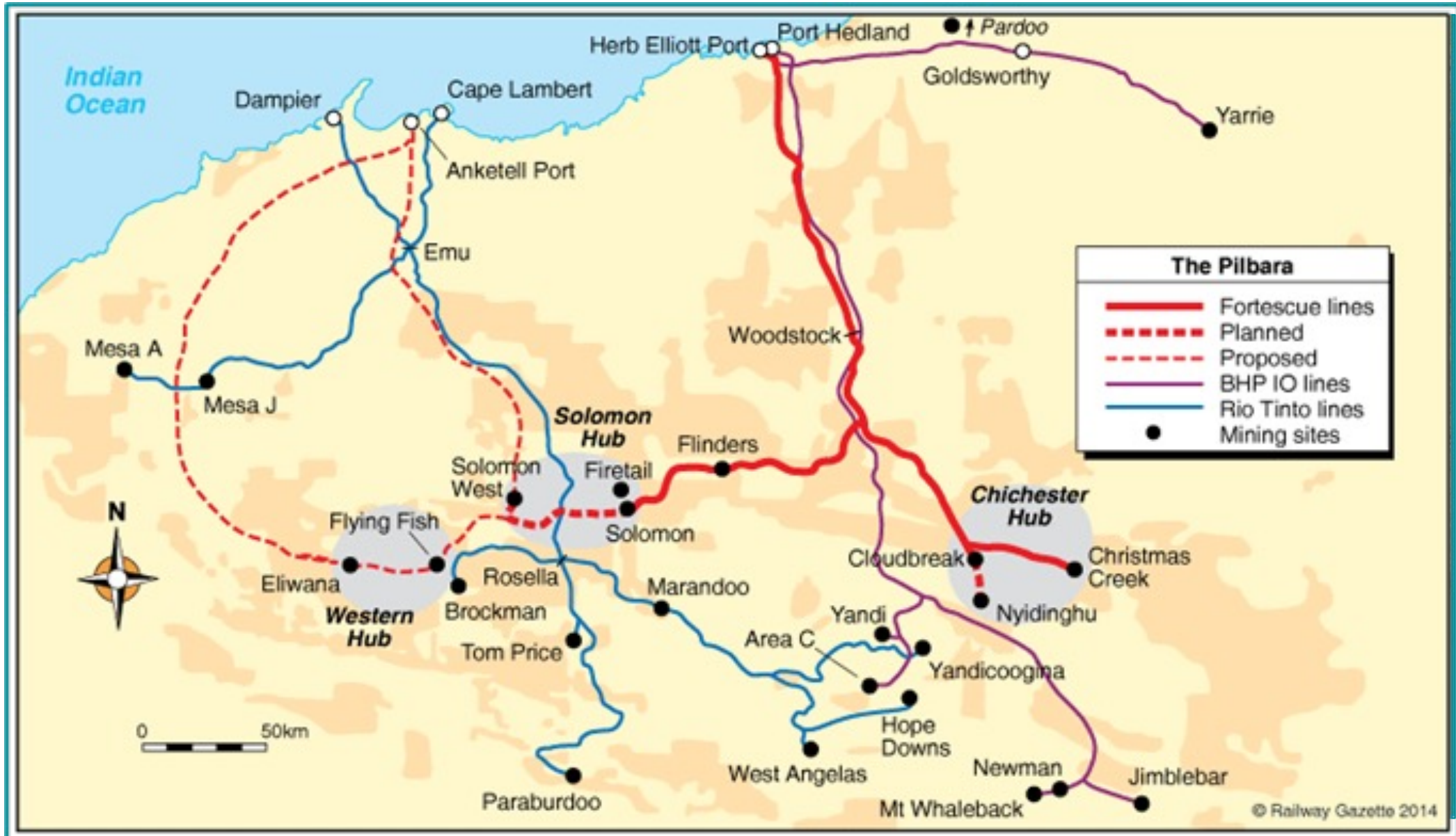
A record breaking 48 hours

Ben Hunt, Metocean Superintendent

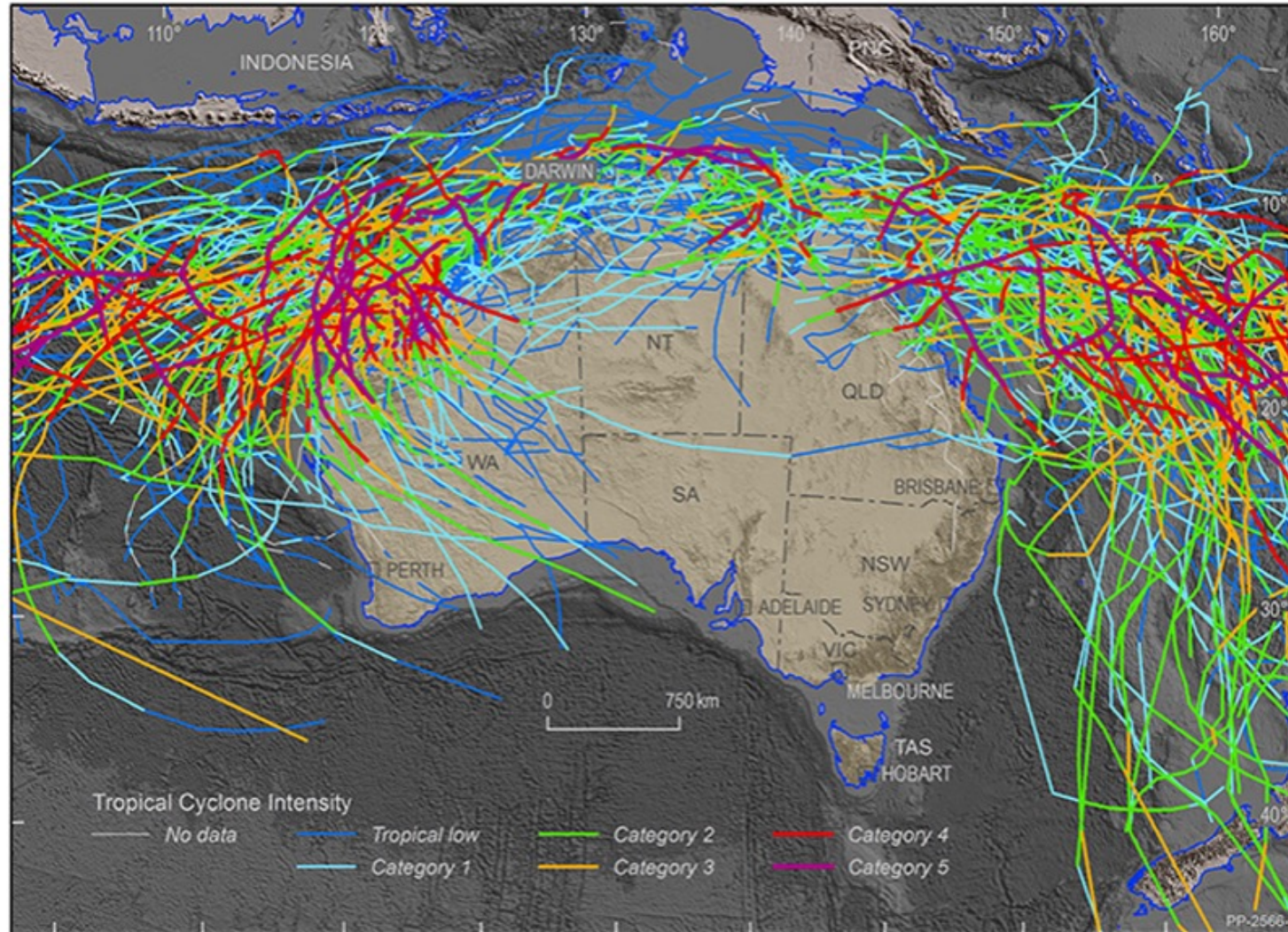
Acknowledgement of Country

Pilbara Ports Authority acknowledges the Traditional Owners of the land and waters in which we operate and pay our respects to Elders past, present and emerging.

Past & Present - Port Hedland

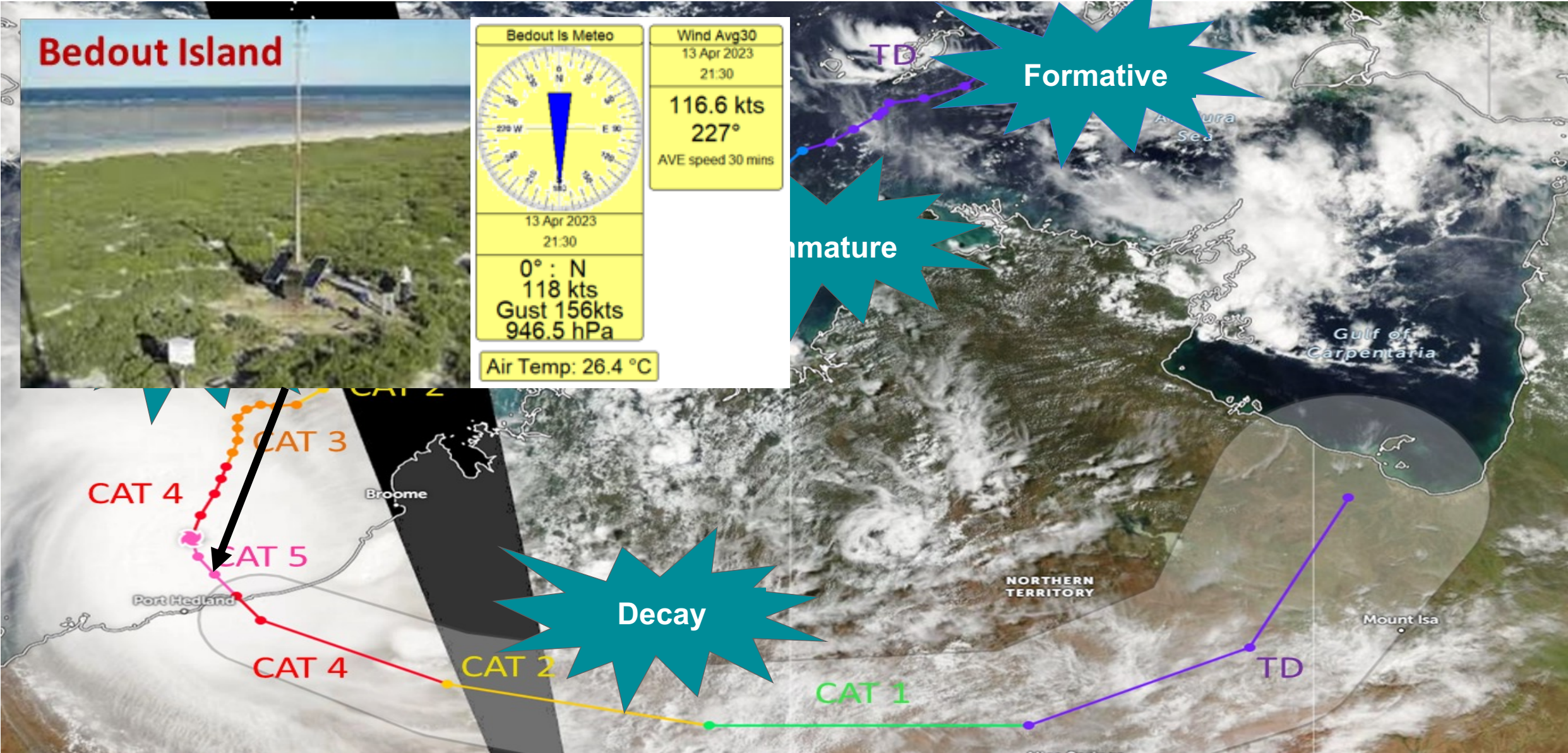


Extreme Weather - Northwest Australia



Historical tropical cyclone activity across Australia between 1981 and 2017. Image: Geoscience Australia

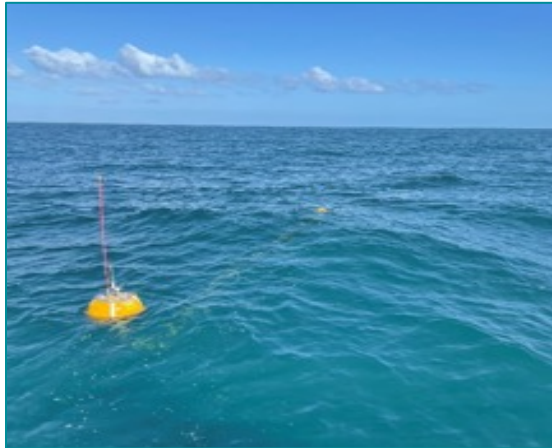
Severe Tropical Cyclone Ilsa





Metocean Instrumentation - Port Hedland

2x Waverider Buoys

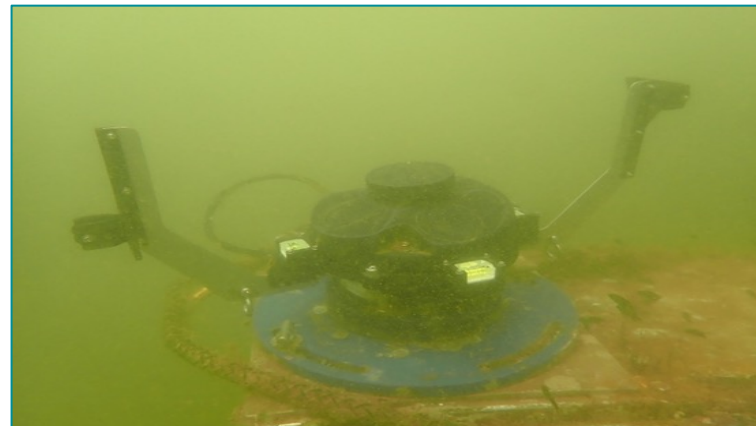


7x Meteorological Stations



11x Radar Water Level Recorders

4x Acoustic Wave and Current Profilers



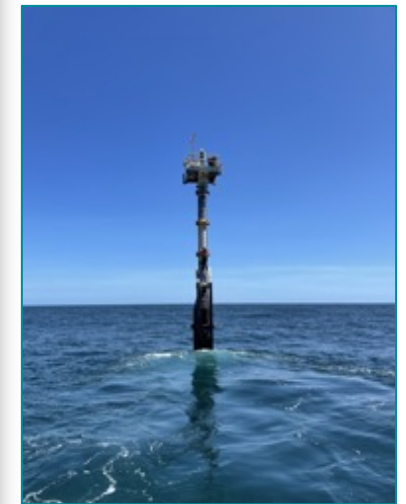
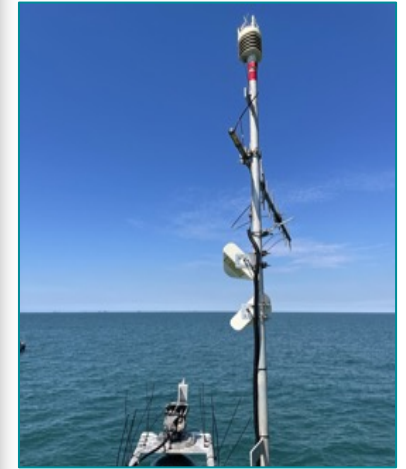
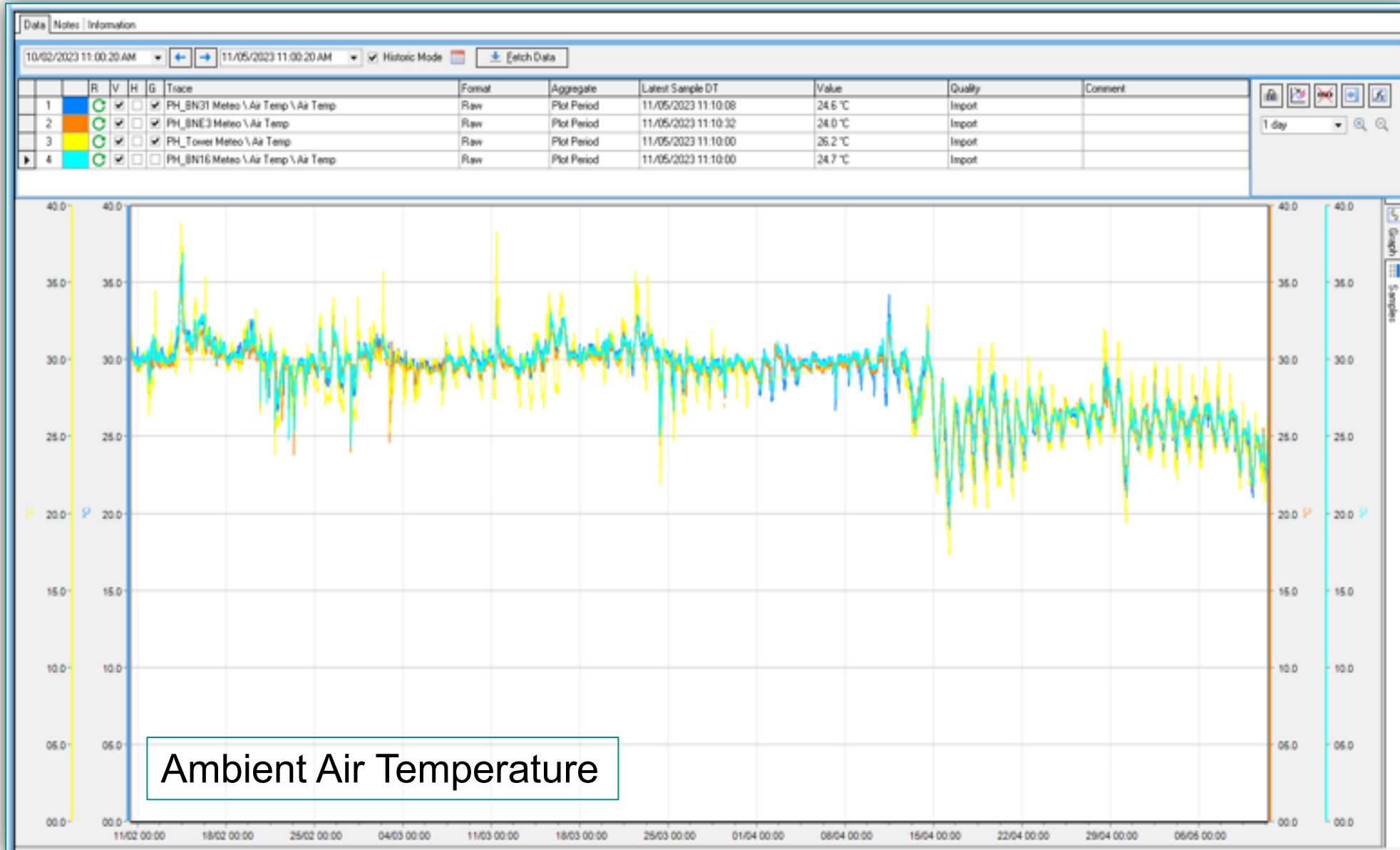
Port Closure - Port Hedland



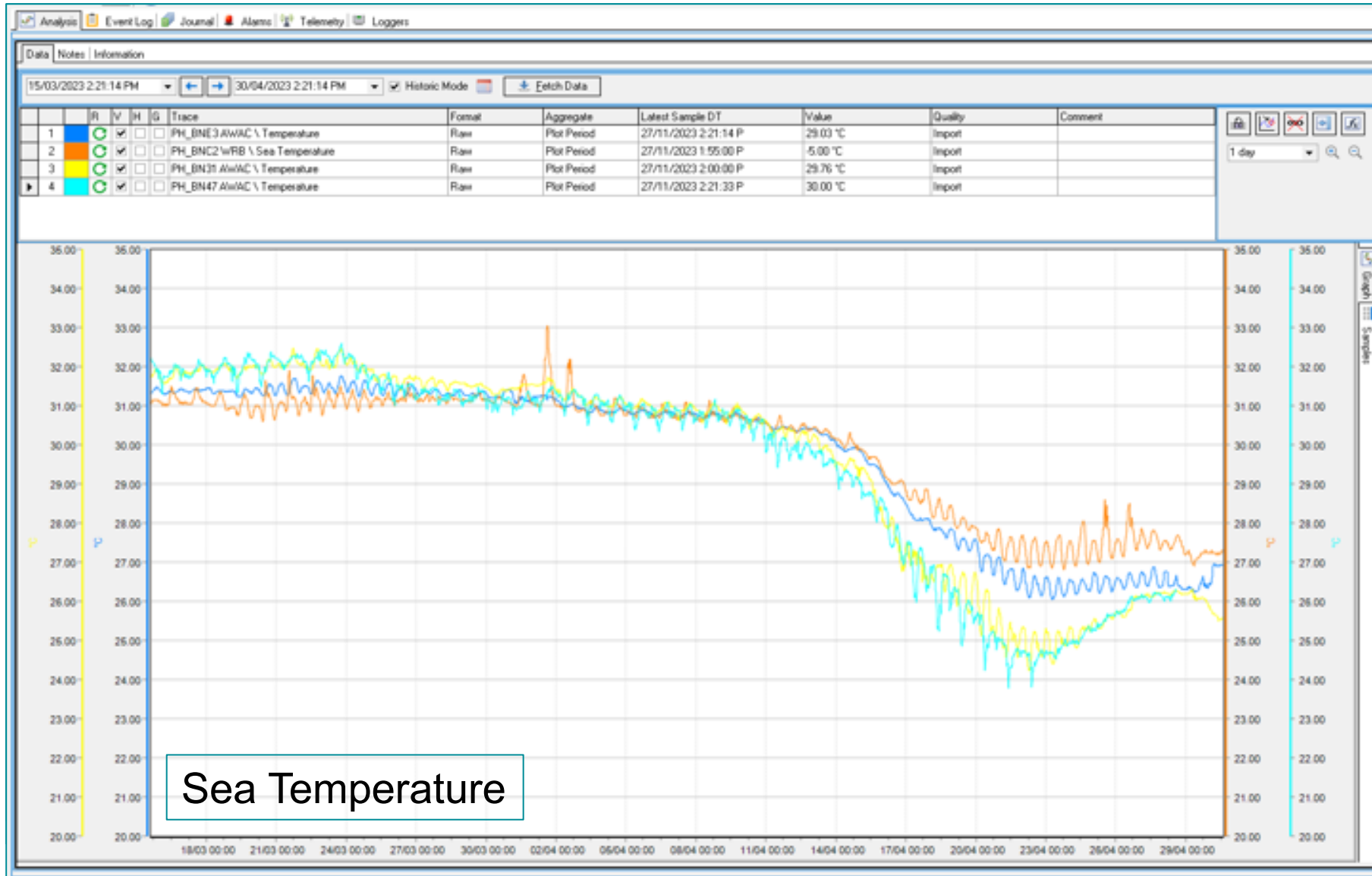
This is an EMERGENCY message from DFES. A Cyclone RED ALERT has been issued for South of Bidyadanga (not including Bidyadanga) to Port Hedland, Marble Bar, Nullagine and Telfer Shelter indoors now. It is too late to leave. Stay in the strongest, safest part of the building, away from doors and windows, and keep them closed. Keep your emergency kit with you. Stay indoors until the ALL CLEAR is given. For more information visit www.emergency.wa.gov.au, call 13 DFES (13 33 37) or listen to local ABC radio.

This is an EMERGENCY message from DFES. A cyclone YELLOW ALERT has been issued for areas between Bidyadanga and Whim Creek including Port Hedland and inland towns of Marble Bar, Nullagine and Telfer. Get ready to move to the strongest, safest part of your home. View

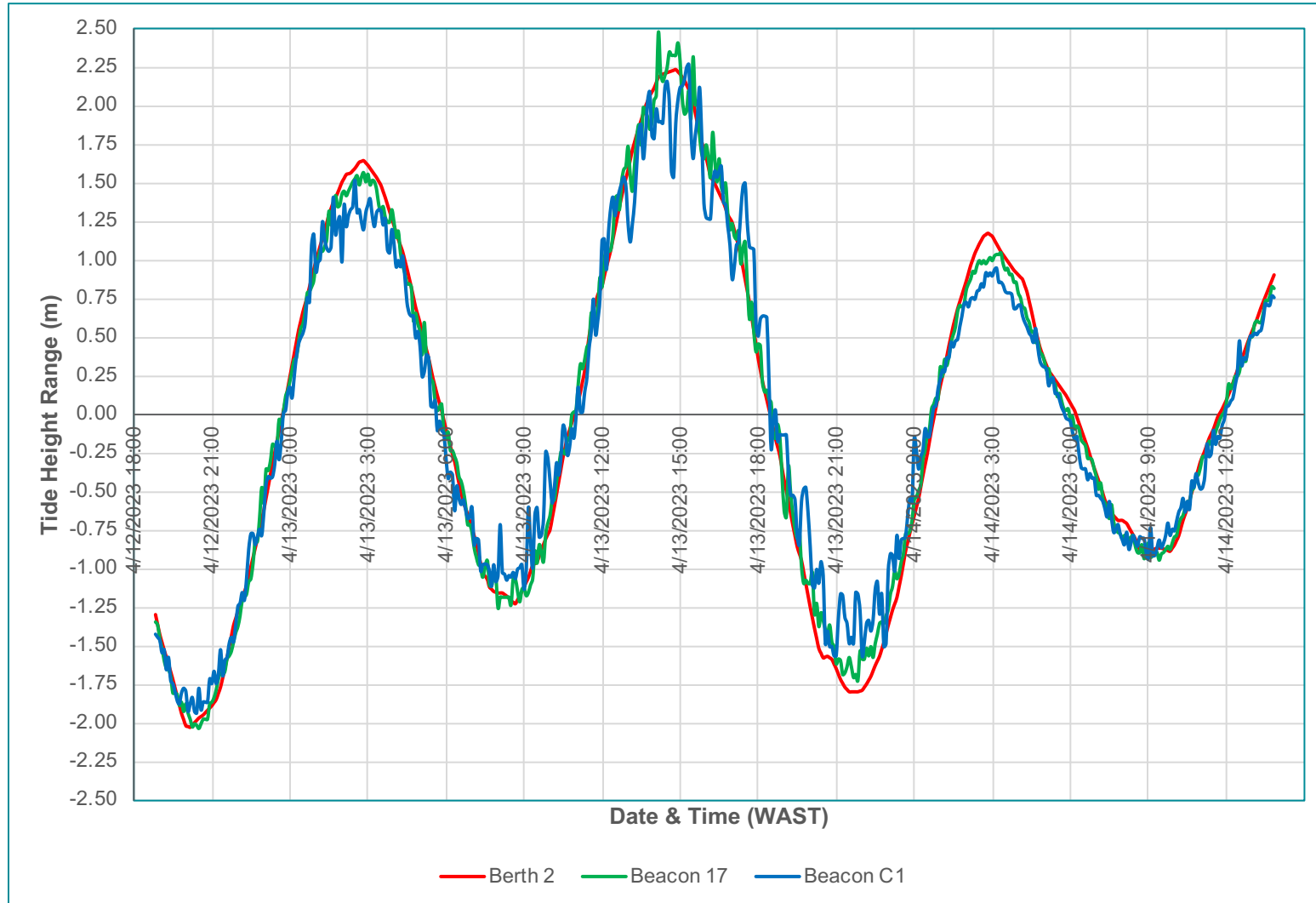
Wind Observations - Port Hedland



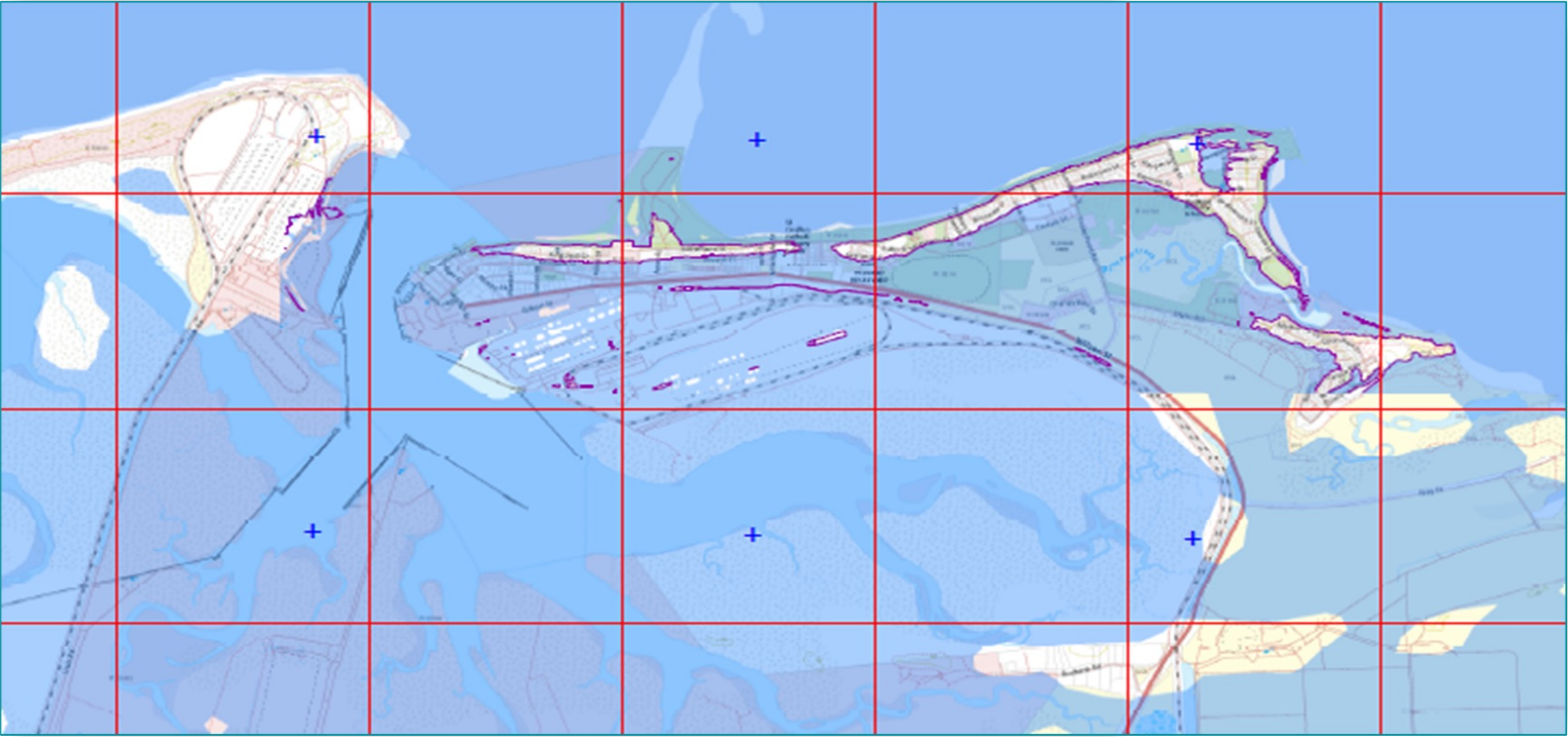
Wave Observations - Port Hedland



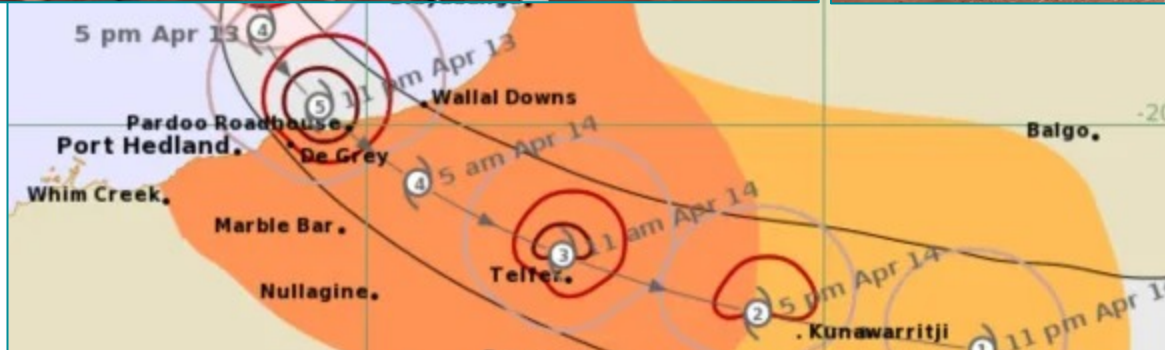
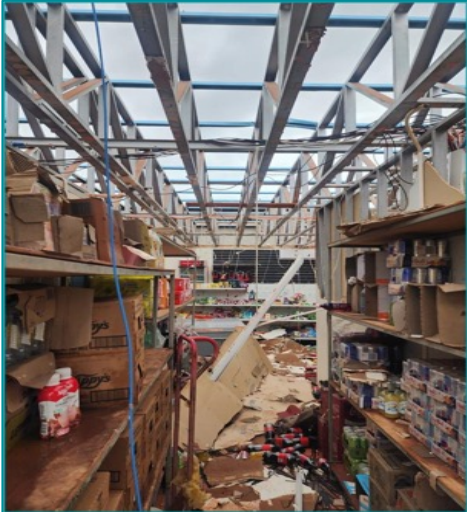
Water Level Observations - Port Hedland



Tide Observations - Berth 2, Port Hedland



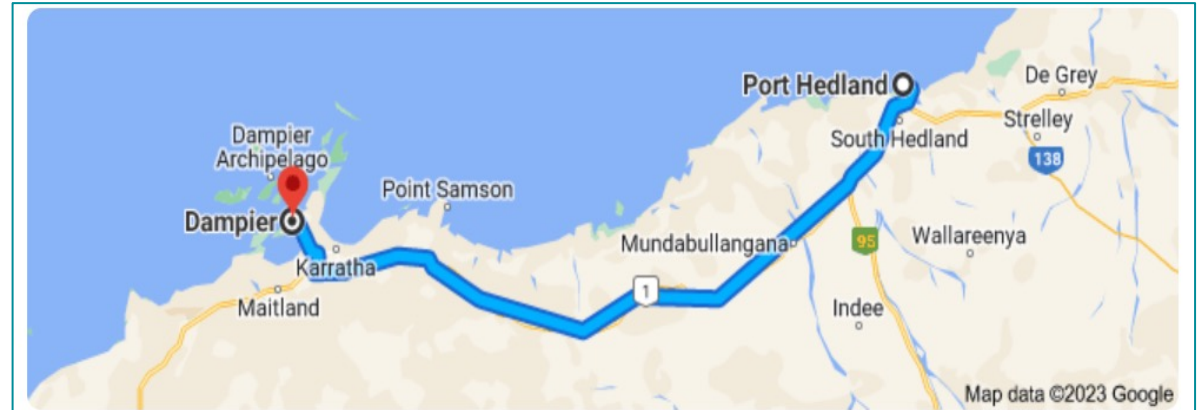
Destroyed - Region of Pardoo



Record Tonnage - Port Hedland

The port of Port Hedland beat its previous 24-hour throughput record, achieving 2.817 million tonnes, with 15 vessel movements.

Roger Johnston, our CEO at the time quoted, “This amount of throughput has never been achieved before and is down to the hard work of our people, who quickly got the port up and running after the passing of Tropical Cyclone Ilsa last week,”.



Thank you

Any questions?

Our **total annual throughput** was a record breaking **752.4 million tonnes**



6,829 safe vessel visits

