



AusSeabed

Seabed mapping data for an informed and prepared Australia

Iain Parnum (Curtin University, Program Theme Lead for Guidelines & Standards)

Aero Leplastrier and Natalie Lennard (Geoscience Australia)

FOO 1 Dec 2023





Department of Transport



The Australian seabed information ecosystem delivers maximum benefits to Australian Governments and users, supporting sustainable use of the marine environment, a resilient society, and the growth of the Blue Economy.



Australian Government
Australian Maritime Safety Authority



Lamont-Doherty Earth Observatory
COLUMBIA UNIVERSITY | EARTH INSTITUTE



Improve the awareness, coverage, quality, accessibility and usability of seabed mapping products in the Australian region through coordination, collaboration, and innovation.





AUS
SEABED

Working towards a **mapped** and **accessible** Australian seabed
with the AusSeabed Strategy



Products

All seabed mapping data and products in the Australian region are guided by F.A.I.R principles and easily used



Coverage

Seabed data coverage in the Australian region provides maximum benefit to users



Awareness

Seabed mapping and AusSeabed is widely understood, valued and used across Government and the community



AUS
SEABED

AusSeabed Marine Data Portal



About Desktop Launcher Layers Location Search Data & Publications

Tools Select Tool Map Narrator Bookmarks

Desktop Launcher

Home



Feedback



Contact Us

House Keeping



Maintenance



Recent Changes



News



Events

Map



Use Map



Reset Map



Select Tool



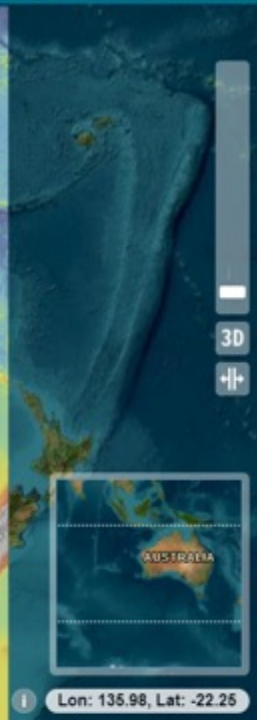
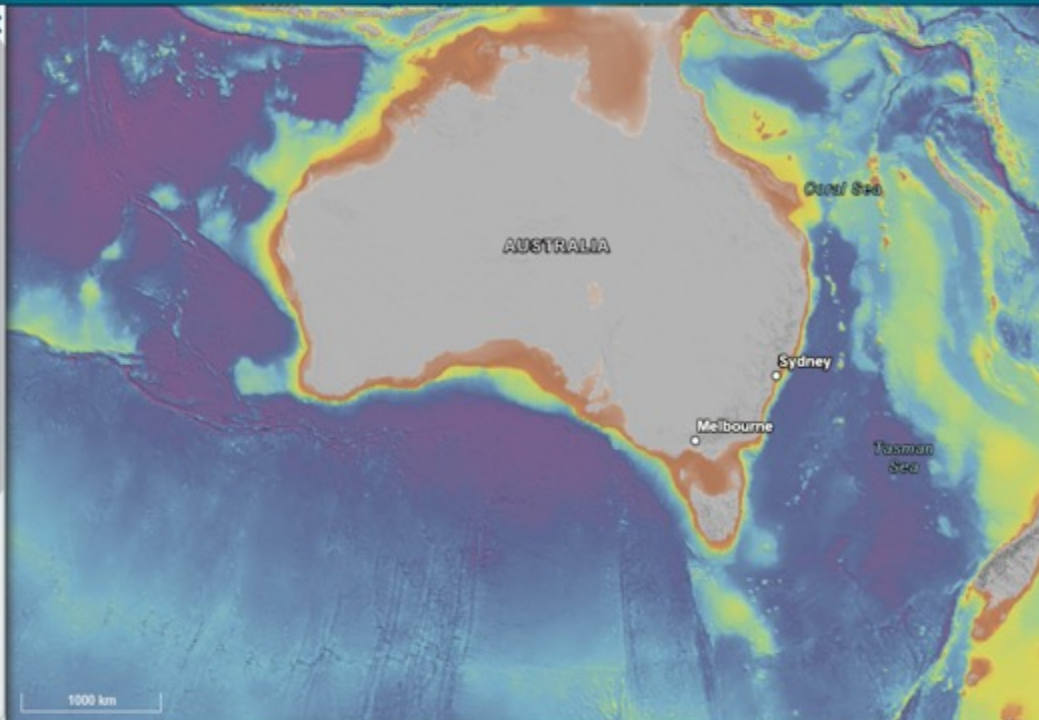
Favourite Layers

Areas of Interest

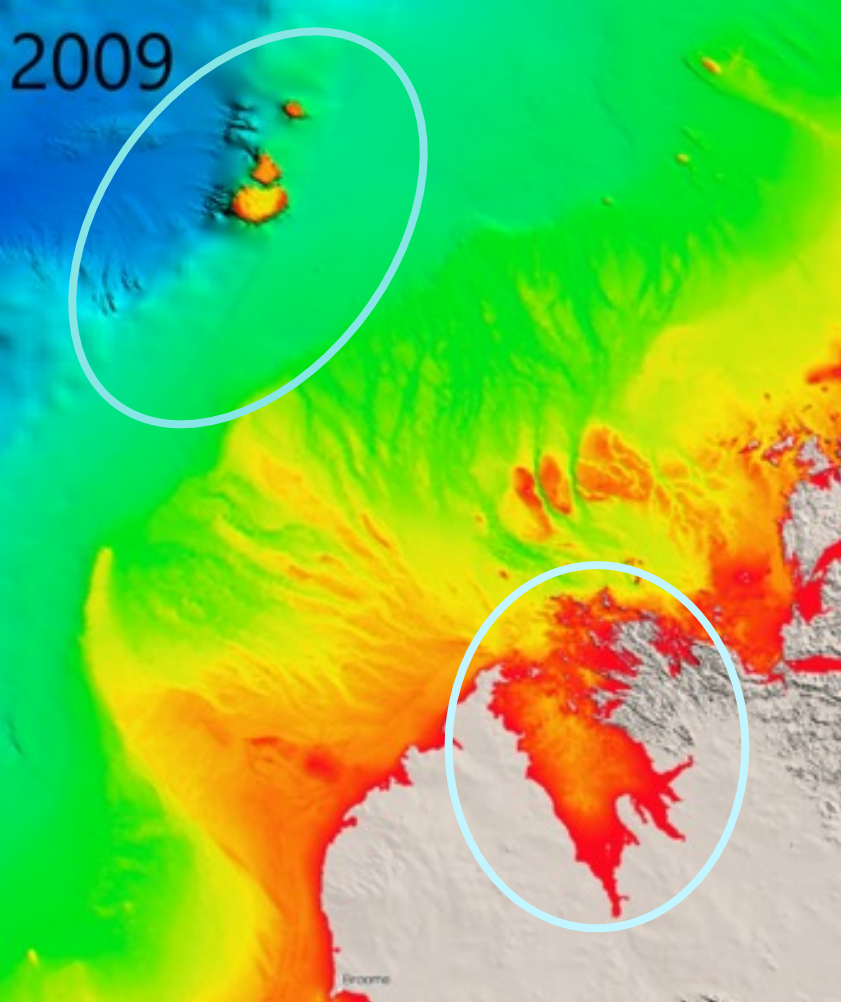


Upcoming Surveys

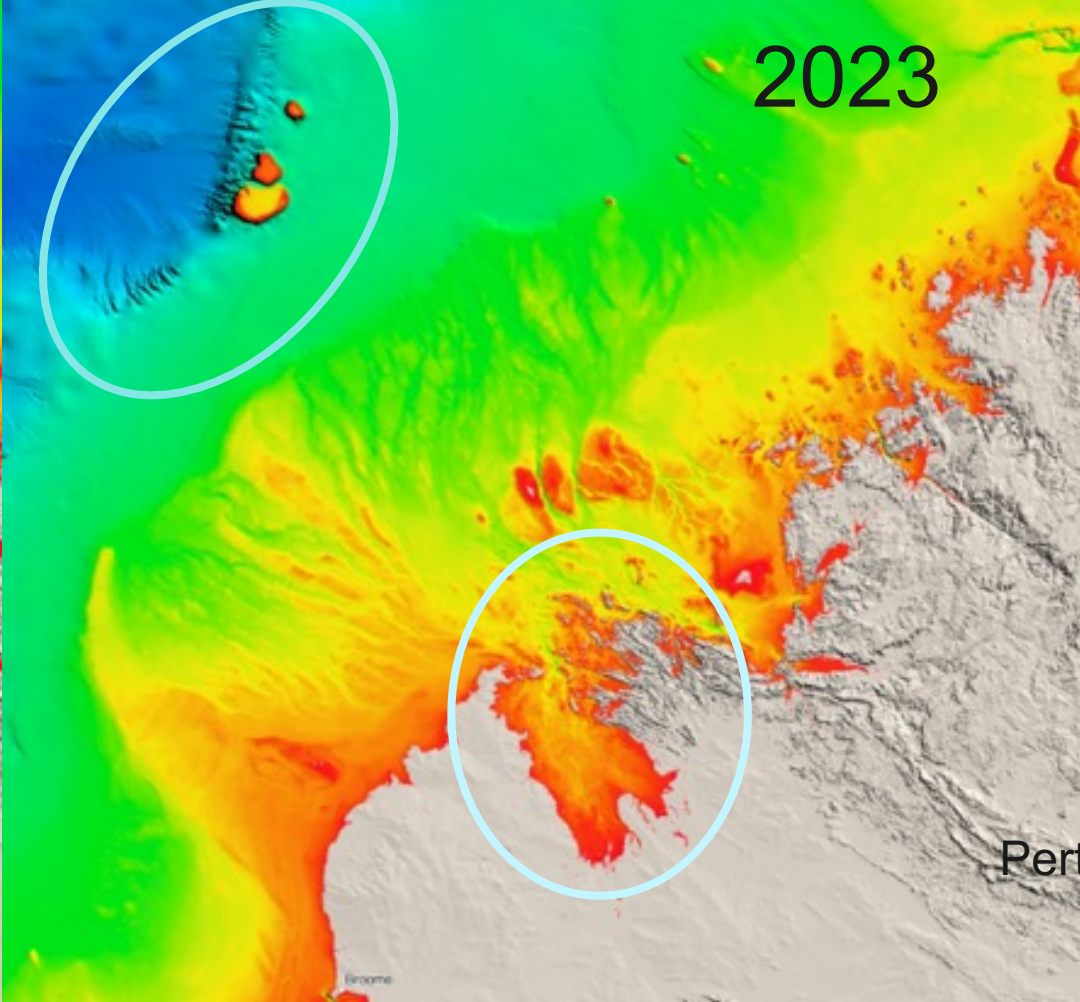
Tools & Guidelines

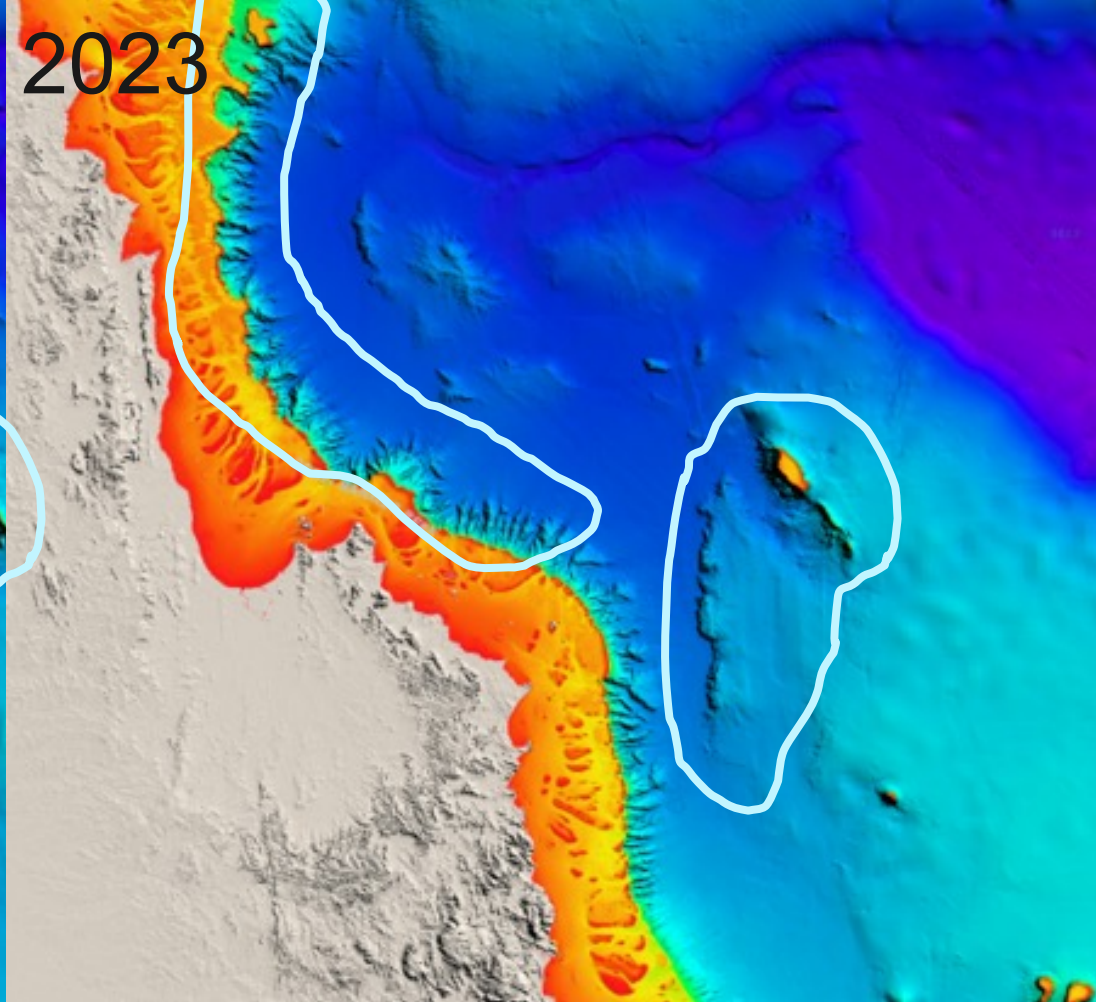
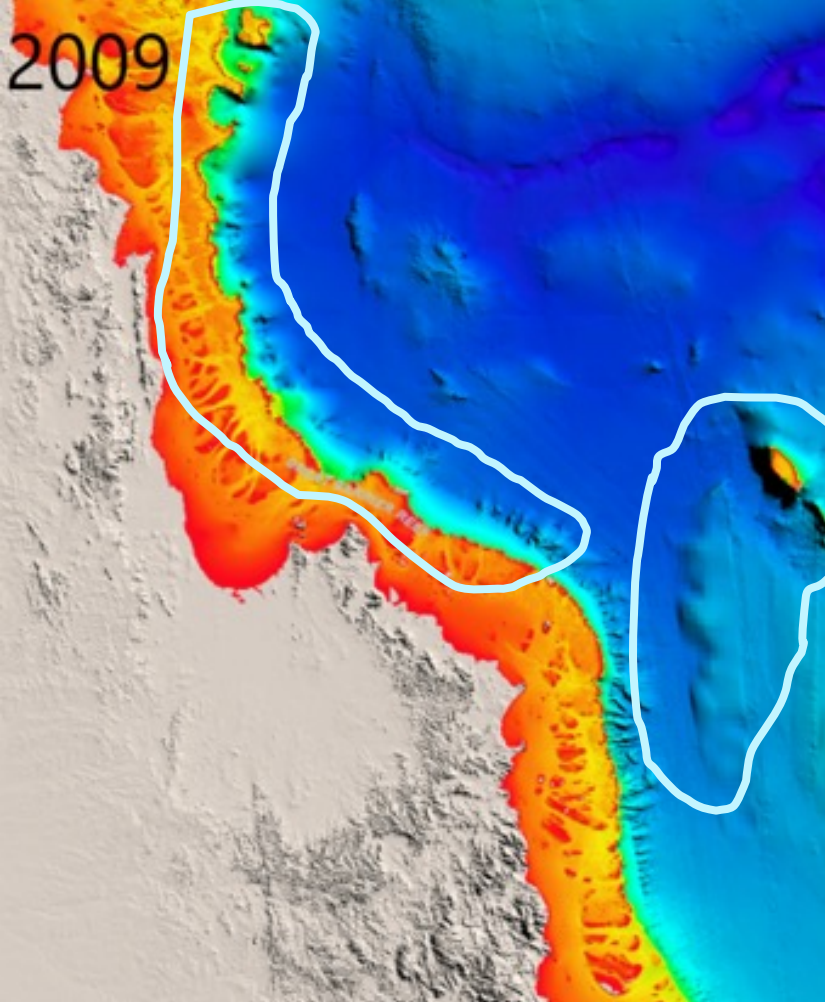


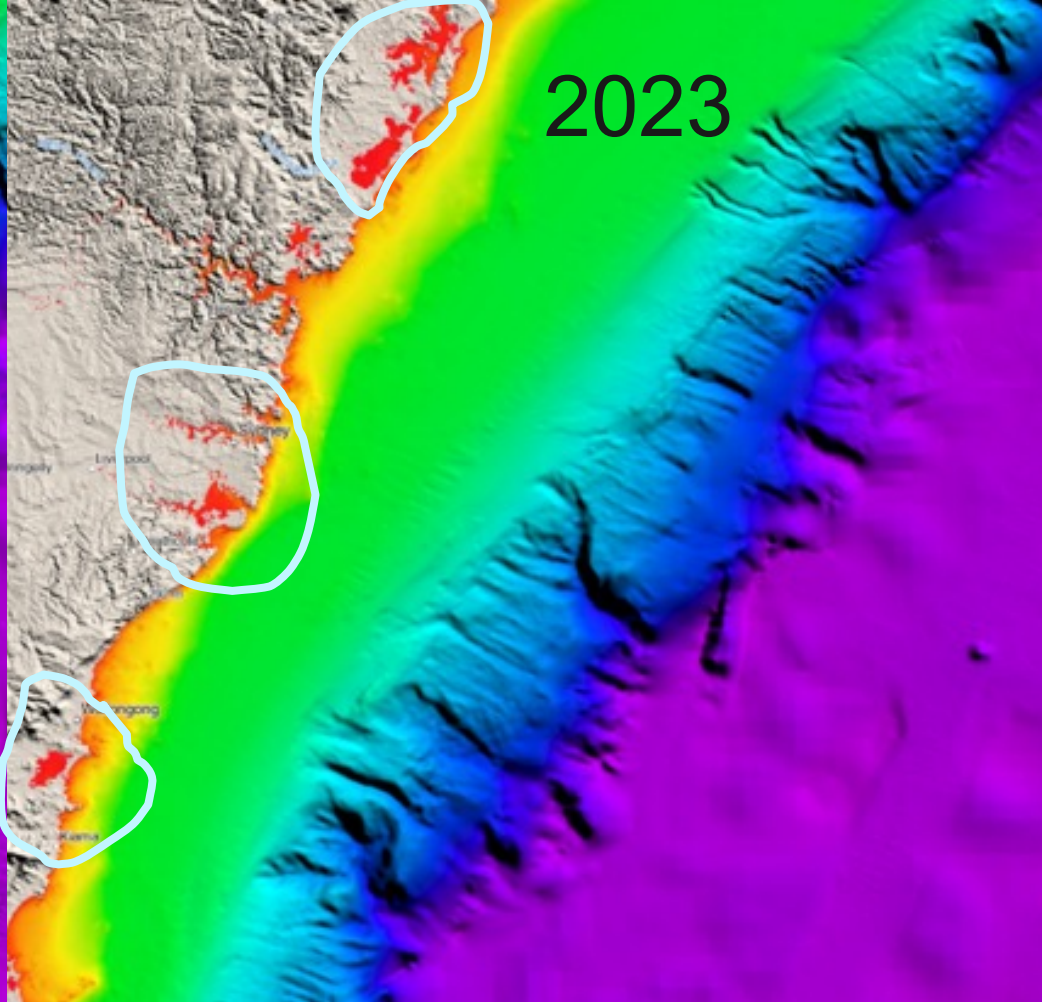
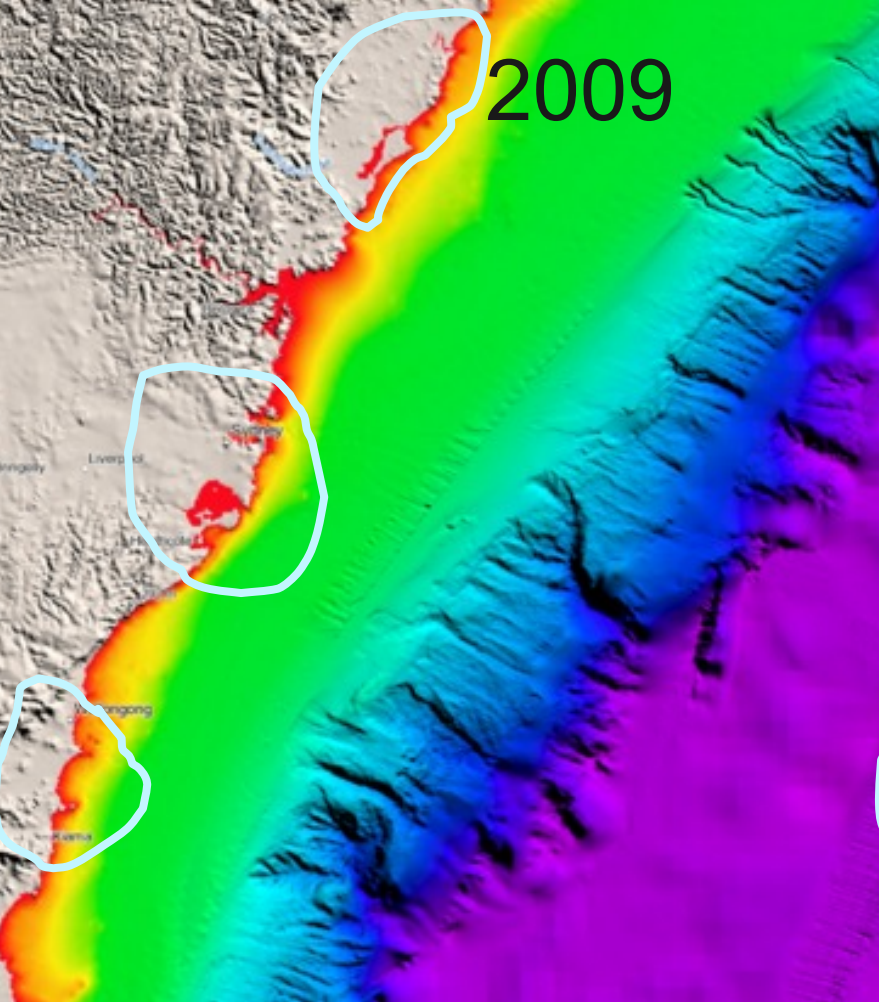
2009



2023

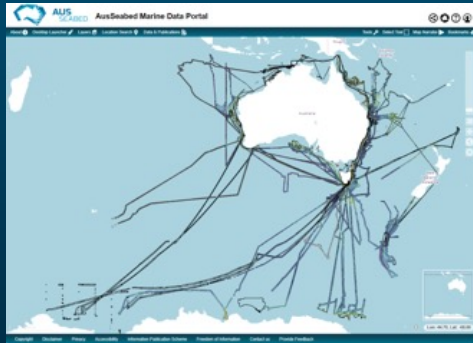






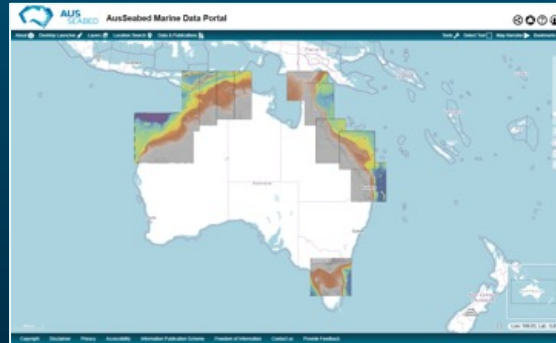


Flagship data products



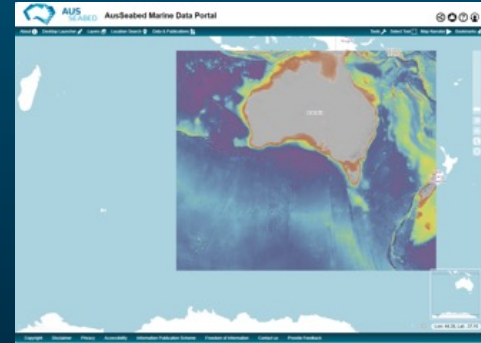
Survey by Survey

- AusSeabed resolution
- Multi-resolution services
- Point cloud
- 143 surveys published



Regional 30 m Grids

- Prioritised areas
- Latest release Torres Strait Nov 2023



National 250 m Grid

- Aiming for annual update
- Latest release Oct 2023

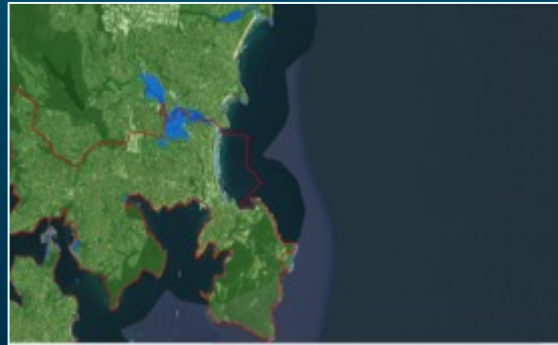


Potential oceanography applications



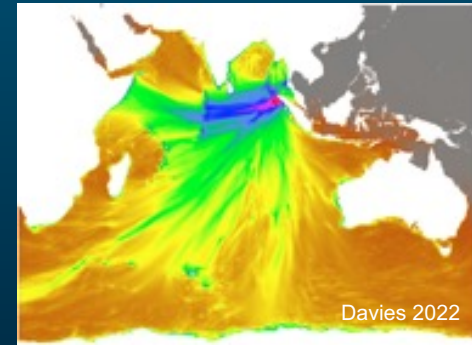
Survey by Survey

- Local circulation modelling
- Coastal erosion and sediment transport



Regional 30 m Grids

- Inundation and storm surge modelling
- Upwelling and shelf circulation
- Sediment compartment modelling



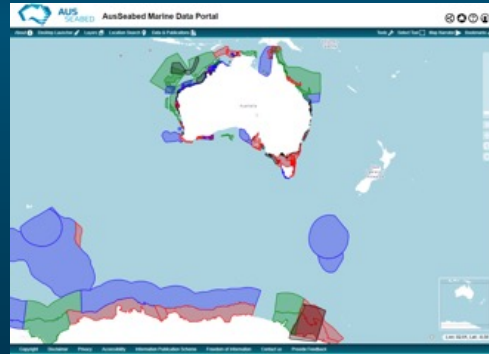
National 250 m Grid

- Tsunami modelling
- Coastal hazard modelling
- Current modelling



ASB Survey Coordination Too - Areas of Interest

- Organisational Priorities
- Utilised by acquisition programs (HIPP, CSIRO)
- Guides priority legacy data delivery and regional 30 m grid compilation



Upcoming Surveys

- Identifying acquisition plans and timelines
- Discover collaboration opportunities



Community Guidelines

- Improve data acquisition
- Standardise quality assurance



Coming soon



Awareness



AusSeabed Community Webinars

November 2023

1st November 2023

Webinars



Website

Latest News



New Australian Sub-bottom Profiler Guidelines released
1 November 2023



New seabed maps give sneak peek at what lies beneath
16 October 2023



Seabed 2023 and the 120th Anniversary of The General Bathymetric Chart of Oceans (GEBCO)
16 June 2023



News

AusSeabed Newsletter No. 34 February 2023

Sign up to our Newsletter

Email Address * * indicates required

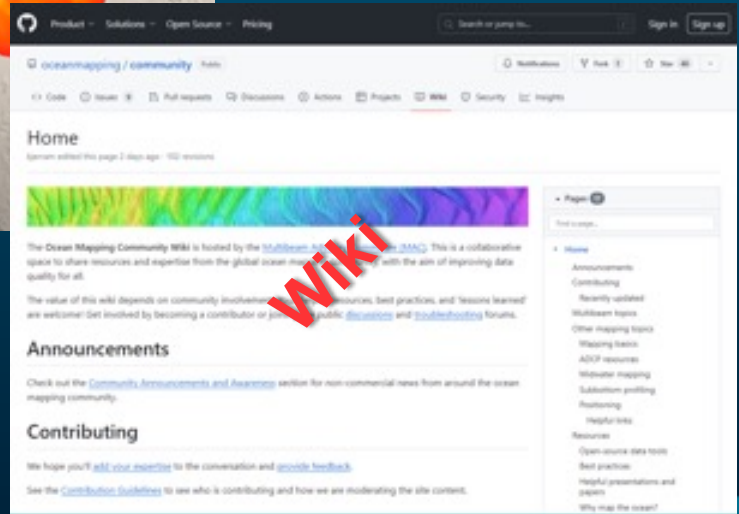
First Name *

Last Name *

Company Name *

Subscribe

AusSeabed Newsletter



Wiki



AusSeabed would love to know more about the data needs of the oceanographic community so please get in touch!

1. Register to use the ASB Survey Coordination Tool <https://coordination.ausseabed.gov.au/> and provide your areas of interest
2. Join the AusSeabed mailing group to receive updates on new data, events, and opportunities <https://ausseabed.gov.au/about/our-community>
3. Reach out for more information at ausseabed@ga.gov.au or visit www.ausseabed.gov.au

Thank you