

PIVOT
MARITIME
INTERNATIONAL

LEADERS IN MARITIME SIMULATION



Metocean Data in Maritime Simulation

R&D | Safety Risk Assessments

Ships

Port Development

Offshore Installations



Simulation modelling is based on real-time data

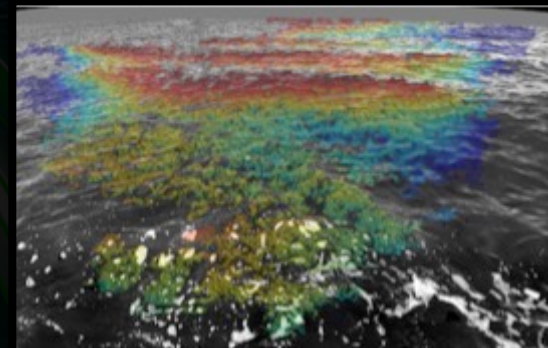
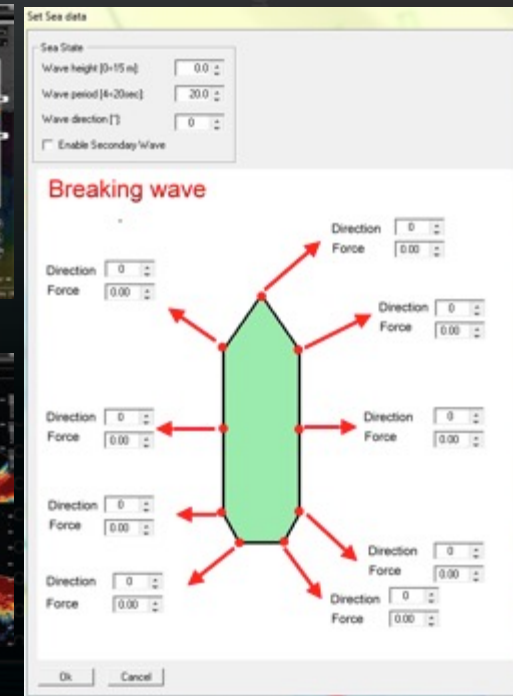
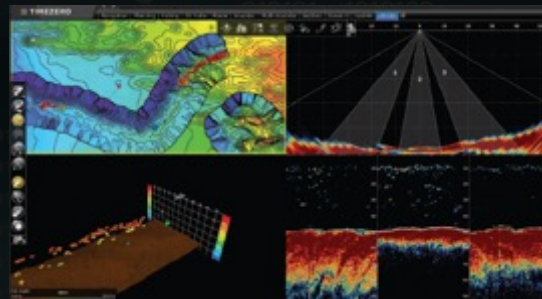
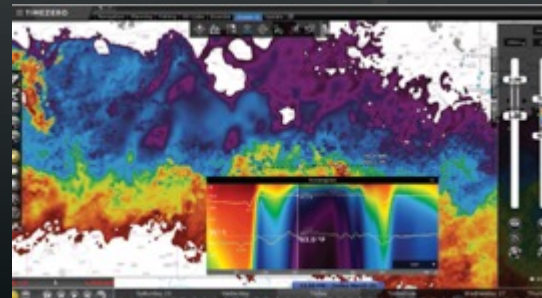
Waves and swells

Wind generated waves and sea spray

Breaking waves with wave force impacts on ships and structures

Opposing currents and wave effects

Vessel wake wash



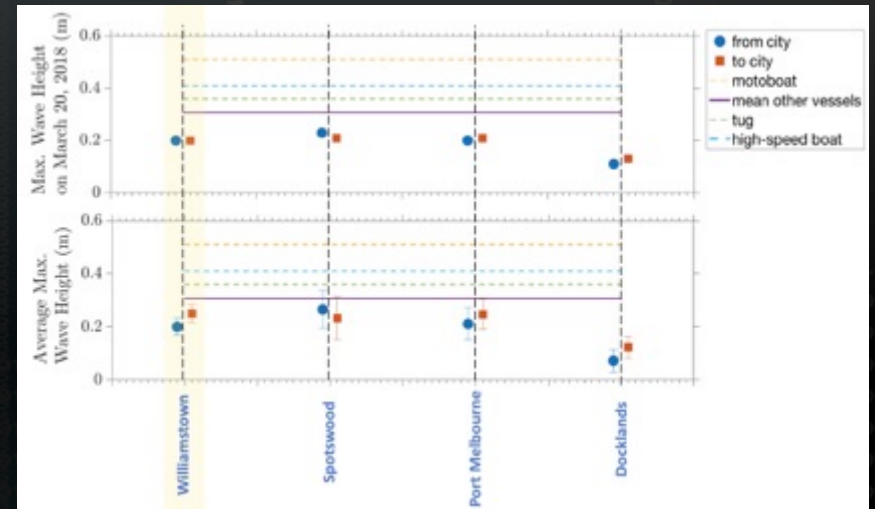
DATA TYPICALLY COLLECTED

Wind direction and strength, wind gusting and shadowing effects

Wave height, length, period, steepness and directions of primary, secondary and reflective waves

Ocean current and tidal heights, directions and strength and tidal surges

Water depths, bottom structures and profiles



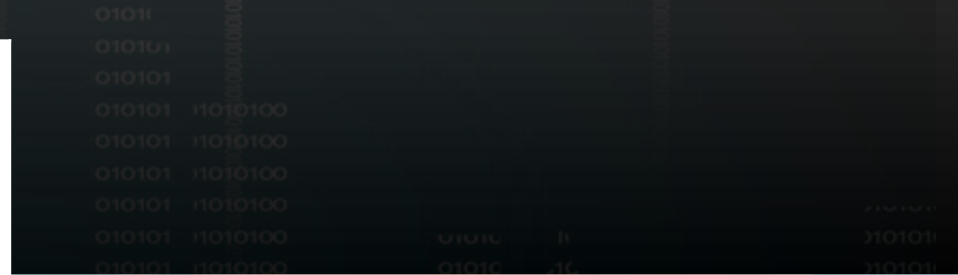
TYPICAL SIMULATION USES

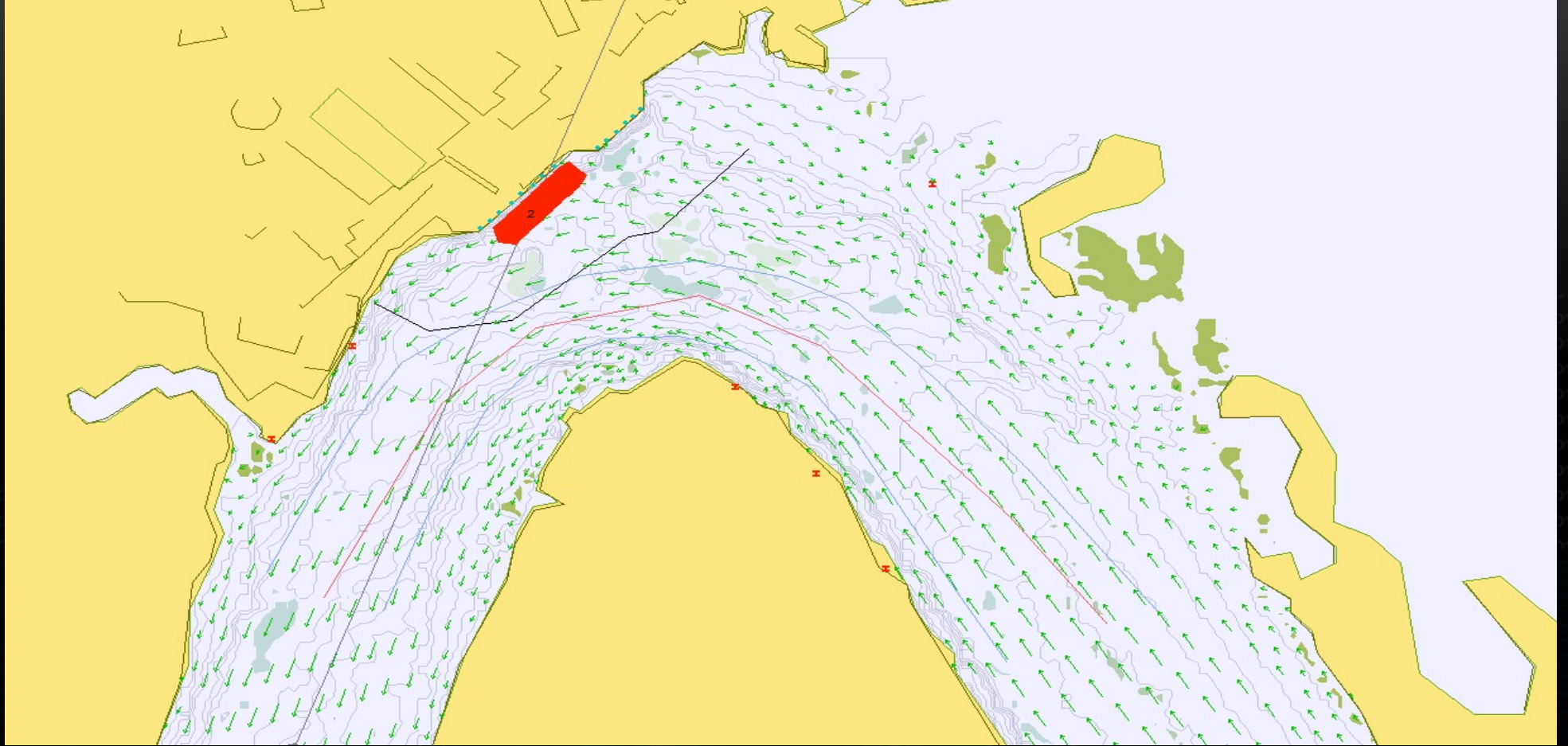
Sea state conditions for ship performance

Size and manoeuvrability of ships to safely navigate port channels

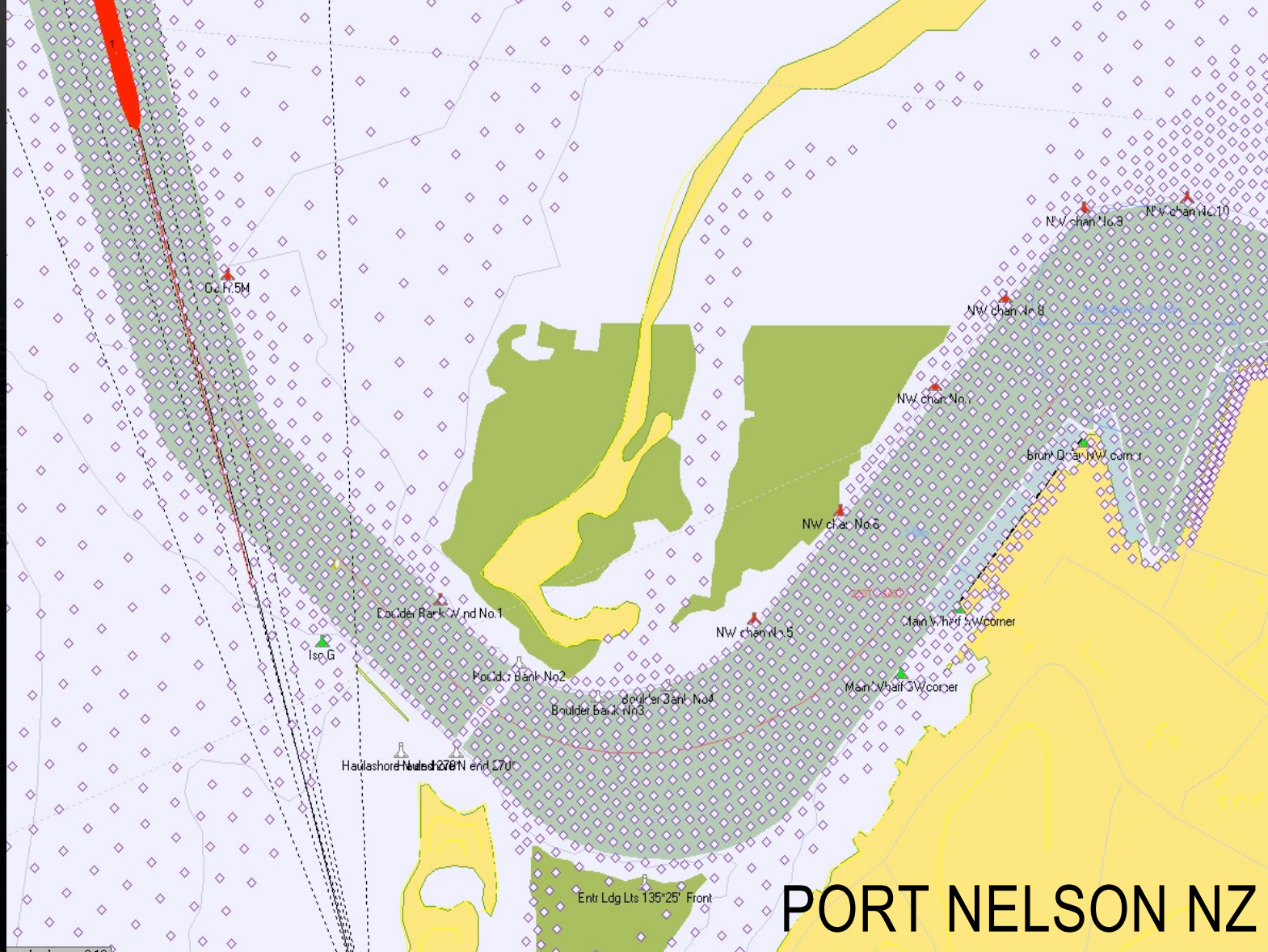
Port development and offshore structures

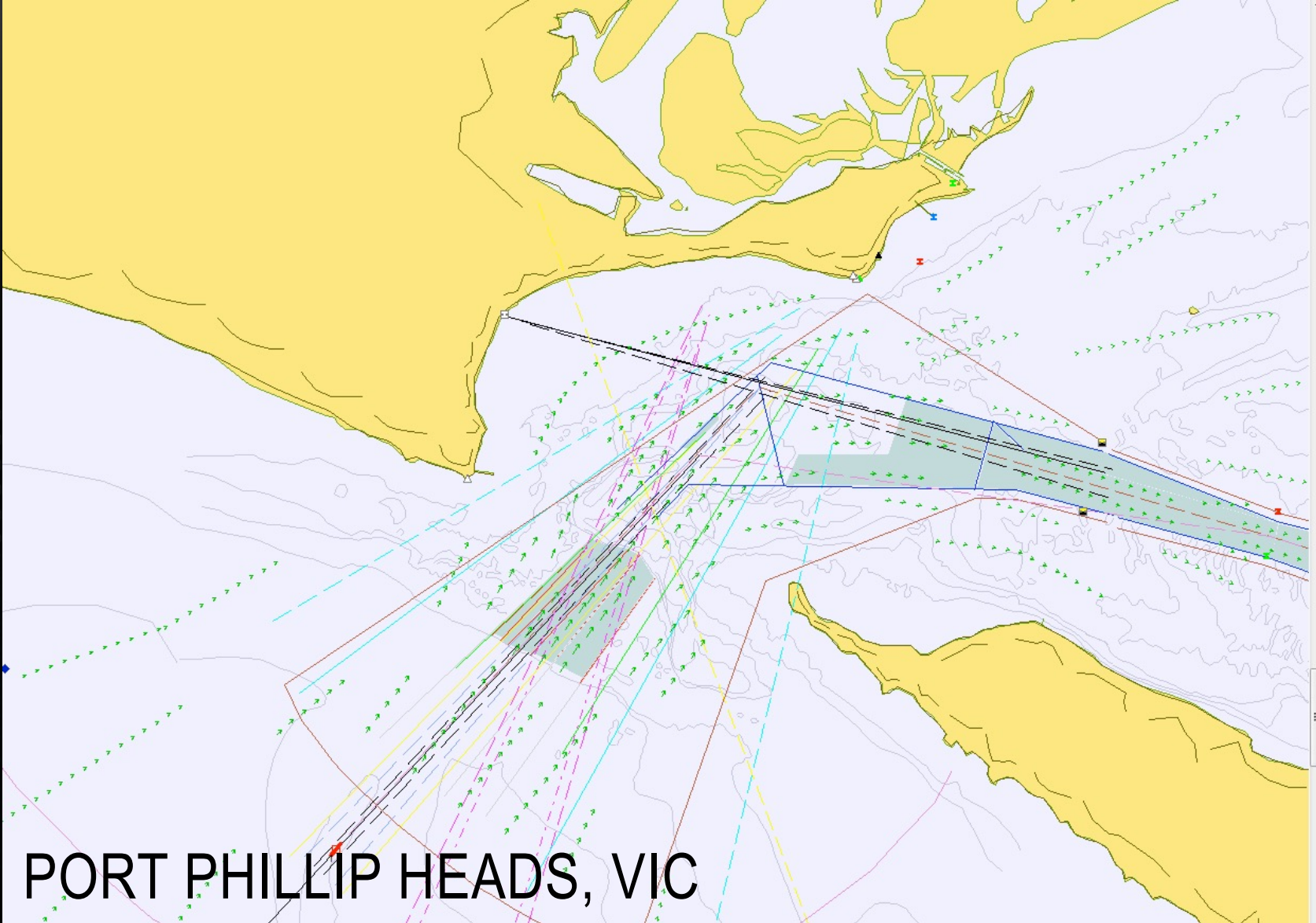
Safety risk assessments





KIUNGA BEND PNG





PORT PHILLIP HEADS, VIC

The logo for Pivot Maritime International features the word "PIVOT" in a large, bold, lime-green font with a stylized, blocky design. Below it, the words "MARITIME" and "INTERNATIONAL" are stacked in a smaller, all-caps, lime-green font. The background is dark with a pattern of binary code (0s and 1s) and a perspective view of a road or runway leading towards a bright horizon line.

PIVOT MARITIME INTERNATIONAL

www.pivotmaritime.com | 60 Nobelius Drive Legana TAS Australia 7277 | +61 3 6330 2929