



Australian Government

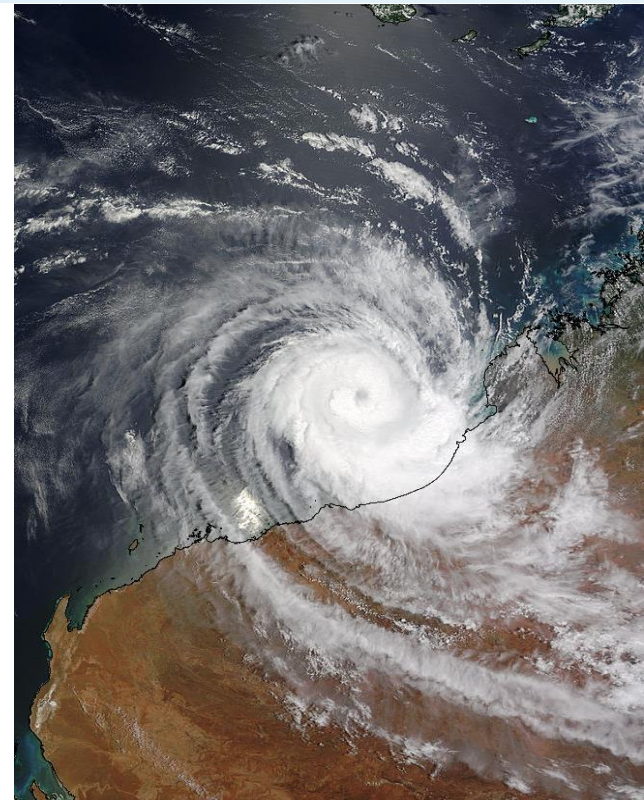
Bureau of Meteorology

Forum for Operational Oceanography
25-27 July 2017

Marine and Ocean Services in the Bureau of Meteorology – Importance of partnerships

Rob Webb, Deputy CEO

Greg Stuart, National Manager Land and Maritime Transport





Australian Government
Bureau of Meteorology

Our New Strategy

Our Focus

Impact & Value

Operational Excellence

Insight & Innovation

The Bureau Way





Australian Government

Bureau of Meteorology





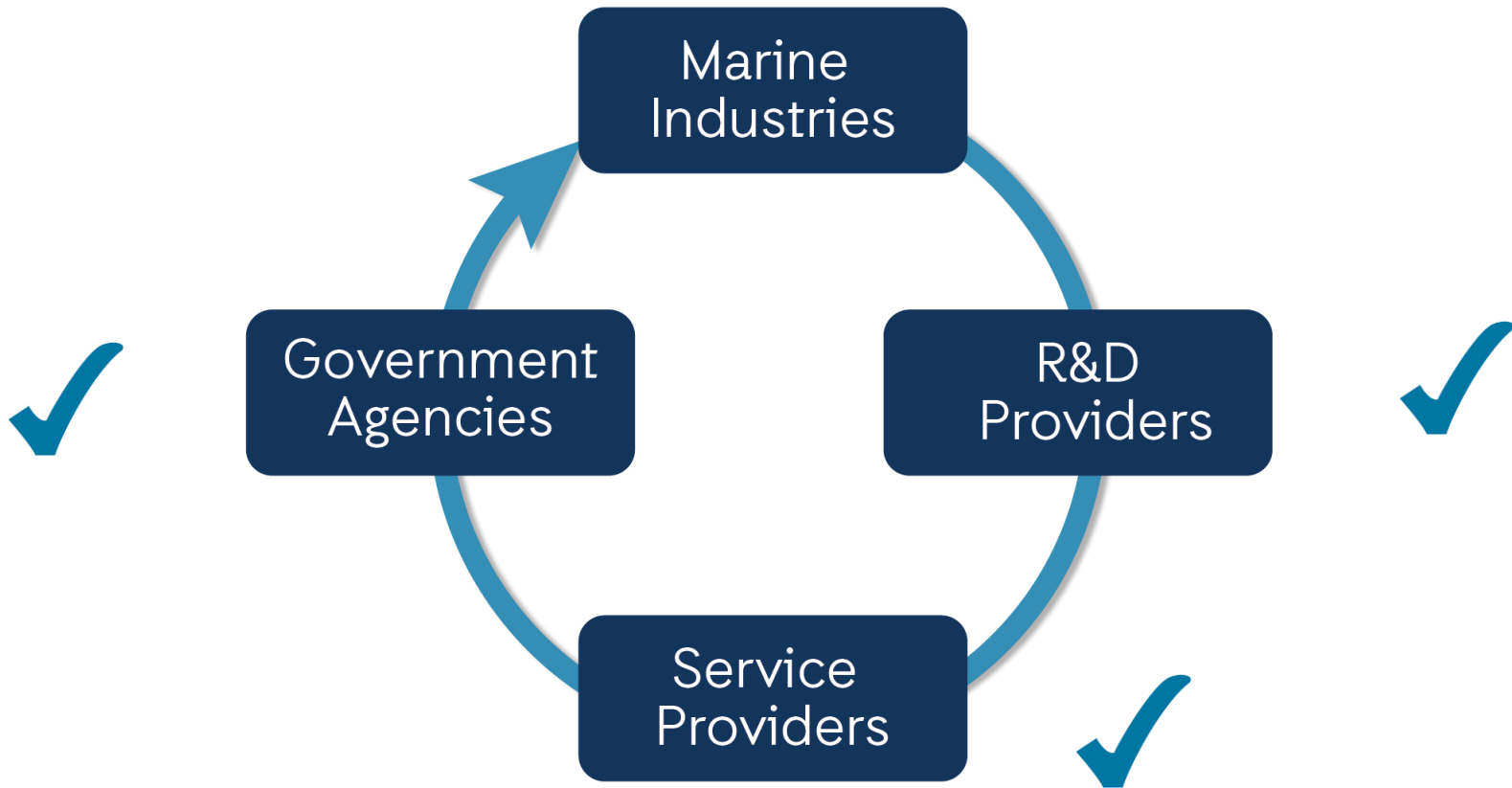
Customer focussed





The Bureau's role

The Four Pillars of Operational Oceanography





The Bureau's role

Operational Oceanography Value Chain



Source: Indi Hodgson-Johnston, IMOS

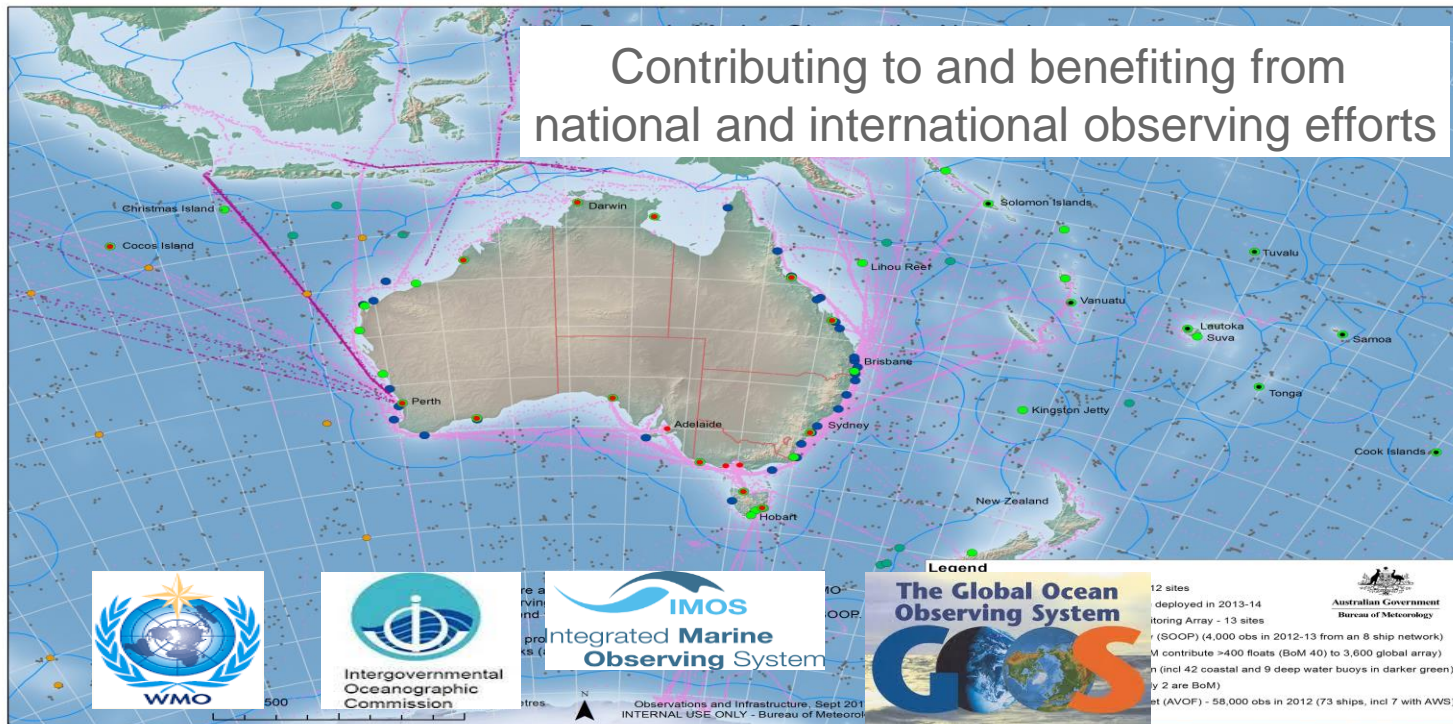
The Bureau's Value Chain





Journey through the value chain

The Bureau's Value Chain





Australian Government
Bureau of Meteorology

Journey through the value chain

The Bureau's Value Chain



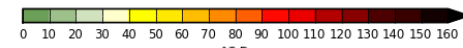
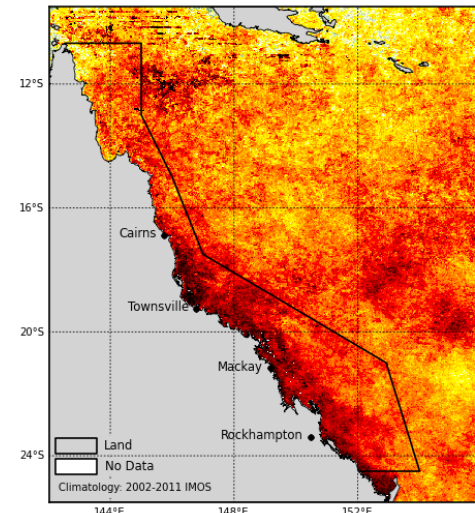
Coral bleaching

Marine heatwaves

Coral bleaching risk

GBRMPA/AIMS describe impacts

IMOS 14-Day Mosaic: DHD
31 March 2017 GBR region



IDYOC070
Created: 06-April-2017 05:15:22
Quality Level ≥ 3
© Bureau of Meteorology 2017

Journey through the value chain

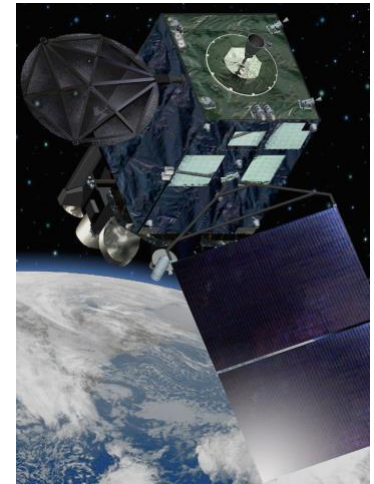
The Bureau's Value Chain



Earth Observations from Space

International space programs

BOM – data assimilation, distribute processed data





Australian Government
Bureau of Meteorology

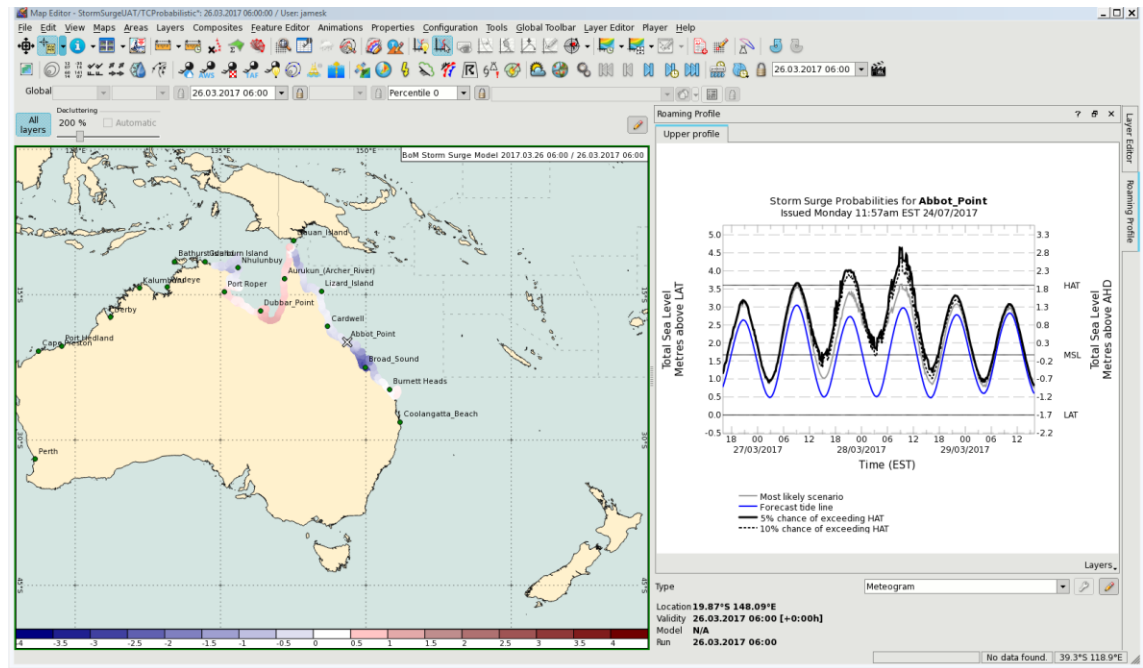
Journey through the value chain

The Bureau's Value Chain



Storm surge

Forecaster GUI
Operational for this
TC season





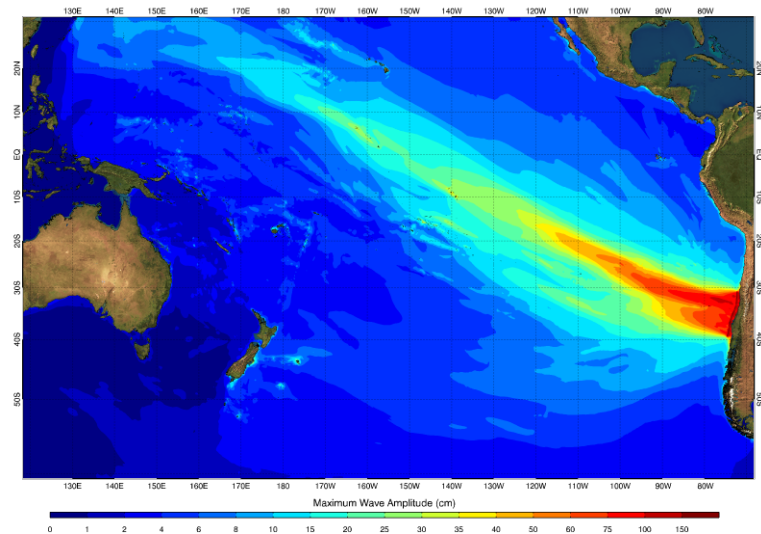
Journey through the value chain

The Bureau's Value Chain



Tsunami warnings

GA provides seismic inputs
BoM issues warnings

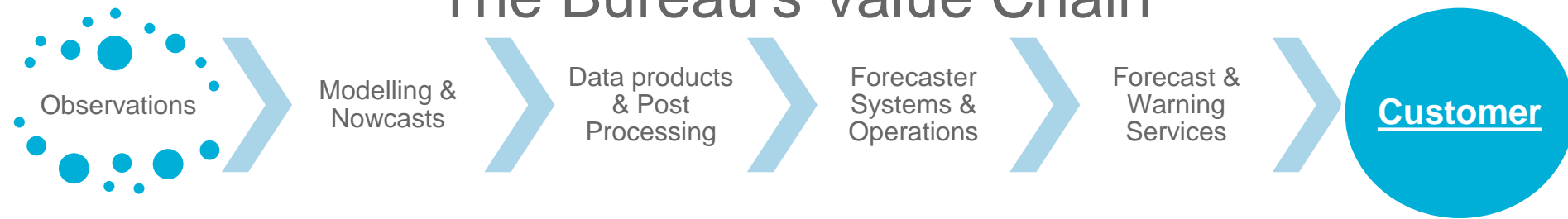




Australian Government
Bureau of Meteorology

Journey through the value chain

The Bureau's Value Chain



Customer support

Fisheries

Port operations

Offshore resources support



Australian Government

Bureau of Meteorology

Partnerships are critical

International

WMO / IOC / IIOE2

Space programs

Observing programs

National

Defence / FOO / NMSC /
ANZEMC / CSIRO / AIMS / GA /
IMOS

State

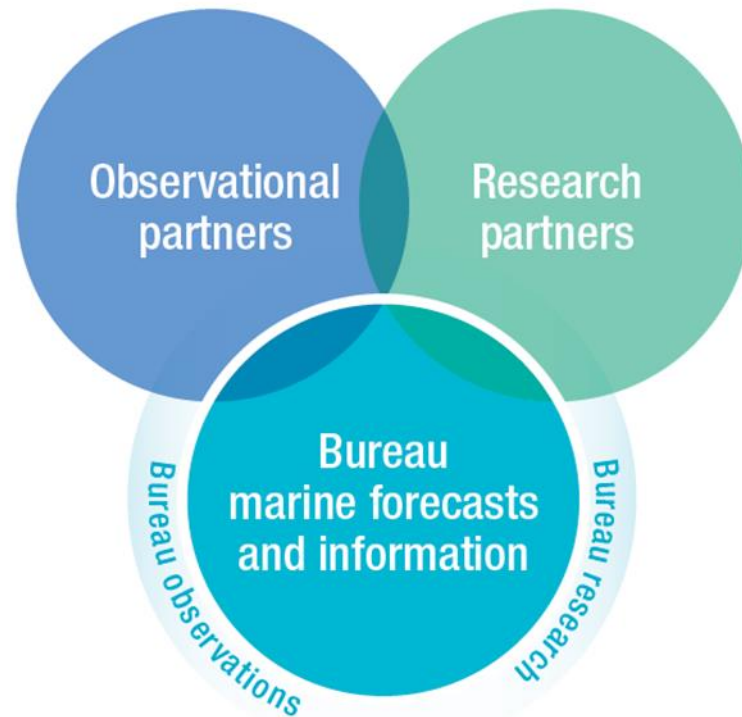
WAMSI, SARDI, eReefs

Sector specific

Environment Management

Port operations

Aquaculture





Australian Government
Bureau of Meteorology

Technology innovations

Australis Supercomputer system

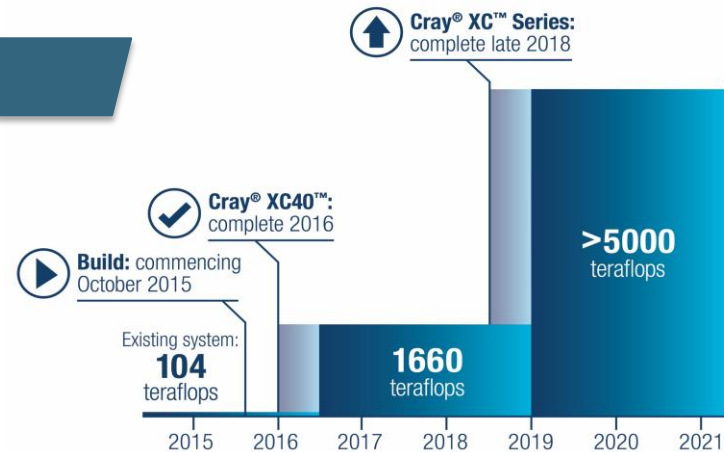
Numerical Prediction for weather, climate, marine, hydrology, space



Supercomputer details

\$59 MILLION (USD)
HAS BEEN ALLOCATED
FOR THE PROJECT

CRAY Inc. WILL SUPPLY THE NEW
SUPERCOMPUTER

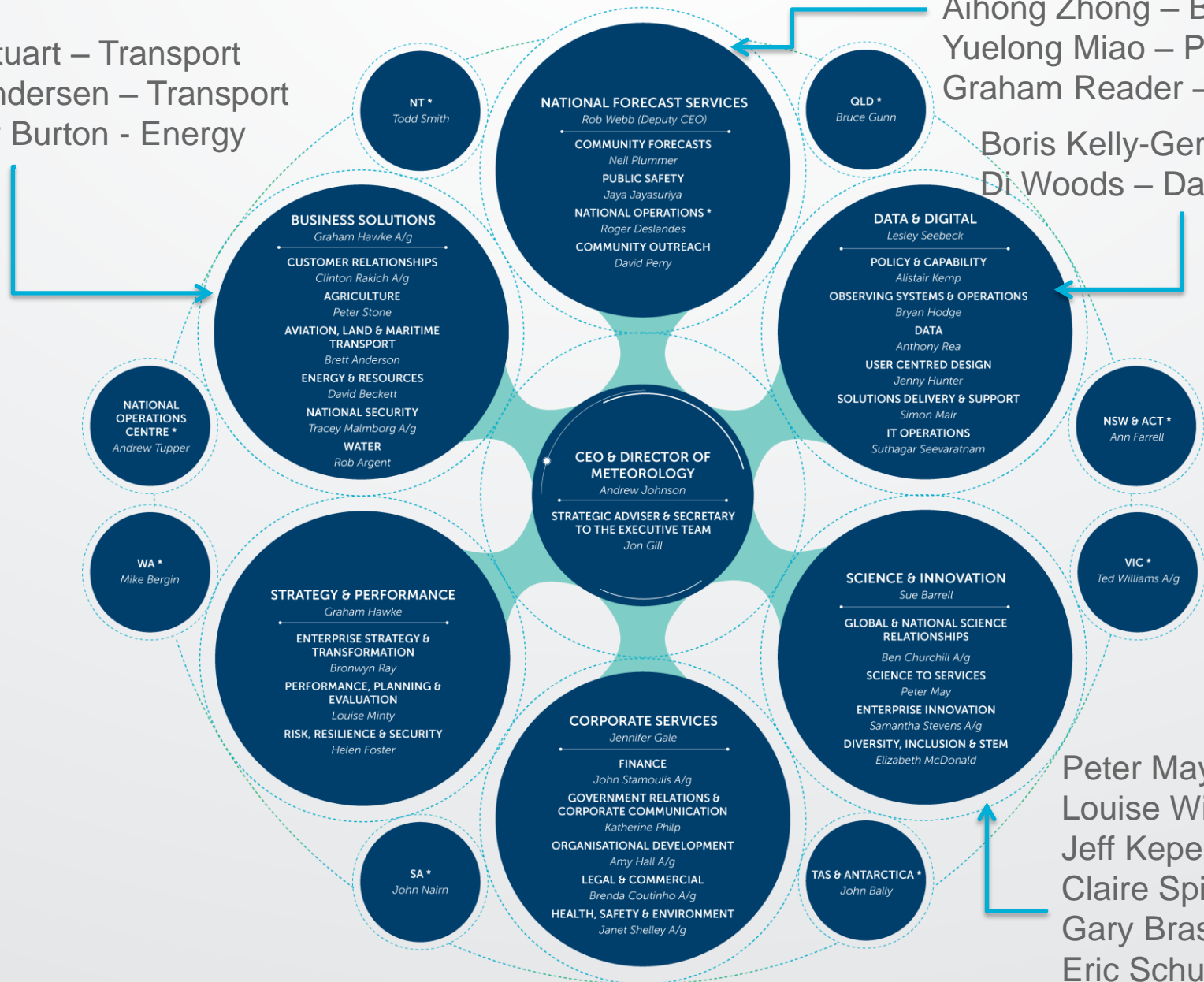


Greg Stuart – Transport
Brett Andersen – Transport
Andrew Burton - Energy

Aihong Zhong – BNOC
Yuelong Miao – Public Safety
Graham Reader – WA

Boris Kelly-Gerreyrn – Data
Di Woods – Data

Peter May
Louise Wicks
Jeff Kepert
Claire Spillman
Gary Brassington
Eric Schulz
Diana Greenslade



* State Offices and National Operations Centre report to the General Manager - National Operations